

# Annual Report 2010



Te Rūnanga o Makaawhio Inc

# MIHIMIHI

## GREETING

---

*Ka timata au ki te tahi kahuraki o Aoraki, e titi nei i te raki. Ka tahuri au ki te toka, ki te mauka tipuna, ko Tūtoko. Ka rere ōku whakaaro ki te awa tapu o Makaawhio me te tino taoka aotea e piatata ana i roto i te wai e rere ana ki te moana.*

*Ka titiro atu au ki te rae o Heretaniwha, rereka wairua o te tauawhi. Whakaroko au ki te tai e haruru ana ki Maitahi. Tau ana te waka i te tūraka o Kāti Māhaki, i te marae o Te Tauraka Waka a Māui.*

*Tērā a Kaipō rāua ko tōna hoa raketira, ko Poke. Ko rāua kā whakaruruhau mō te iwi, kā tohu hoki o kā kōrero e pā ana ki ō tātou tipuna, ki te whakapapa ki reira i tuia i a tātou. Ko Uruao te waka. Ko Rakaihautu te takata. Ko Te Koeti Turaka te tipuna. Ko Kāti Māhaki te hapū. Ko Kāti Mamoe rāua ko Kāi Tahu kā iwi. Tihei mauriora!*

*Tuatahi, ka tuku whakawhetai au ki te atua. Nō reira, he honore, he kororia ki a ia, he maukaroko ki temata o te whenua, he whakaaro pai tētahi ki tētahi, ahakoa ko wai.*

*Kai te mihi atu, kai te taki atu, ki te iti, ki te rahi, ki kā whānauka hoki kua wehe ake ki te pō mai Muriwhenua ki Rakiura, tae noa ki kā motu kē o te ao. Nō reira koutou te huka whānauka kua hiko i te tau e pahure atu, haere atu koutou ki te Whare o Pohutukawa. Kumea i kā waka aituā ki ruka i kā wai roimata ki te taha o kā tipuna e tātari ana ki tua o te arai. Haere, haere, haere atu rā, haere koutou i roto i te rakimarie.*

*Rātou ki a rātou, tātou anō ki a tātou.*

*Ka huri au ki a tātou e takatū nei i roto i te ao takata. Nō reira, e kā whanauka, tēna koutou, tēna koutou, tēna tātou katoa. (Translated on backcover)*

I am privileged to be able to present the Te Rūnanga o Makaawhio Inc Annual report for 2010, which provides members with an overview of some of the activity carried out over the past twelve months on your behalf.

This year we are entering our three-year election cycle. Some members that have served us will choose not to re-stand and we may see some new faces take up the mantle as governors of this rūnanga. There are a number of opportunities which have yet to be taken through to their full potential. There are still many challenges before us. If we work together, there is no challenge that cannot be overcome.

*E raka te mauī, e raka te katau, me mahitahi tātou.*

*(A community can use all the skills of its people, let's work together)*

## SUSAN WALLACE-TUMUAKI

# RĀRANGI ŪPOKO

---

## CONTENTS

### Page

1	Annual General Meeting Agenda
2	Te Rūnanganui-Executive
3	Te Rūnanga o Makaawhio Operational Structure
4	Rūnanga Representatives 2009-2010
6	Financial Report <u>Audited Accounts</u>
8	Rūnanga
19	Marae <u>Reports:</u> Upokorūnanga (Verbal)
27	Kaiwhakahaere-Chairperson
30	Upokotuarua
32	Te Rūnanga o Ngāi Tahu Representative <u>Komiti-Committee Reports:</u>
34	Komiti Taiao
35	Komiti Pounamu
37	Komiti Māhakitaka
38	Komiti Whakamahi
39	Komiti Marae Tumu-whakahaere
41	Notes Page



# PANUI

---

## AGENDA

**DATE:** Saturday, Rima (September) 25<sup>th</sup>, 2010  
**TIME:** 9.30am  
**VENUE:** Kaipo, Te Tauraka Waka a Māui Marae, Maitahi (Bruce Bay)

1. **Mihimihi me te Karakia tīmataka**
2. **Kai te noho Members Present**
3. **Tuku Aroha Apologies** (Supp Agenda)
4. **Kā mate** (Supp Agenda)
5. **Mahi ā whare Housekeeping**
  - 5.1 Emergency Procedures
6. **Special Meeting**
  - 6.1 Vote on proposed alterations to our rules.
7. **Hui-ā-tau (AGM)**
  - 7.1 Resolution to move from Special Meeting into Hui-ā-tau (AGM)
8. **Mīniti Minutes of previous Annual General Meeting**
  - 8.1 24 September 2009
9. **Mea ka puta Matters arising**
10. **Pūroko Putea Annual financial accounts**
  - 10.1 Treasurers Report (Pages 5-6)
  - 10.2 Audited Accounts (Supp Agenda)
11. **Appointment of Auditor**
12. **Pūroko Reports**
13. **Pōtitanga Rūnanganui Executive Committee Elections**
  - 13.1 Announcement of Nominees (Profiles-Supp Agenda)
  - 13.2 Distribution of Ballot Papers
  - 13.3 Appointment of Ballot Scrutineers (2)
14. **Mahi whānui General business**
  - 14.1 Strategic Working Group Presentation

# TE RŪNANGANUI

---

## THE EXECUTIVE



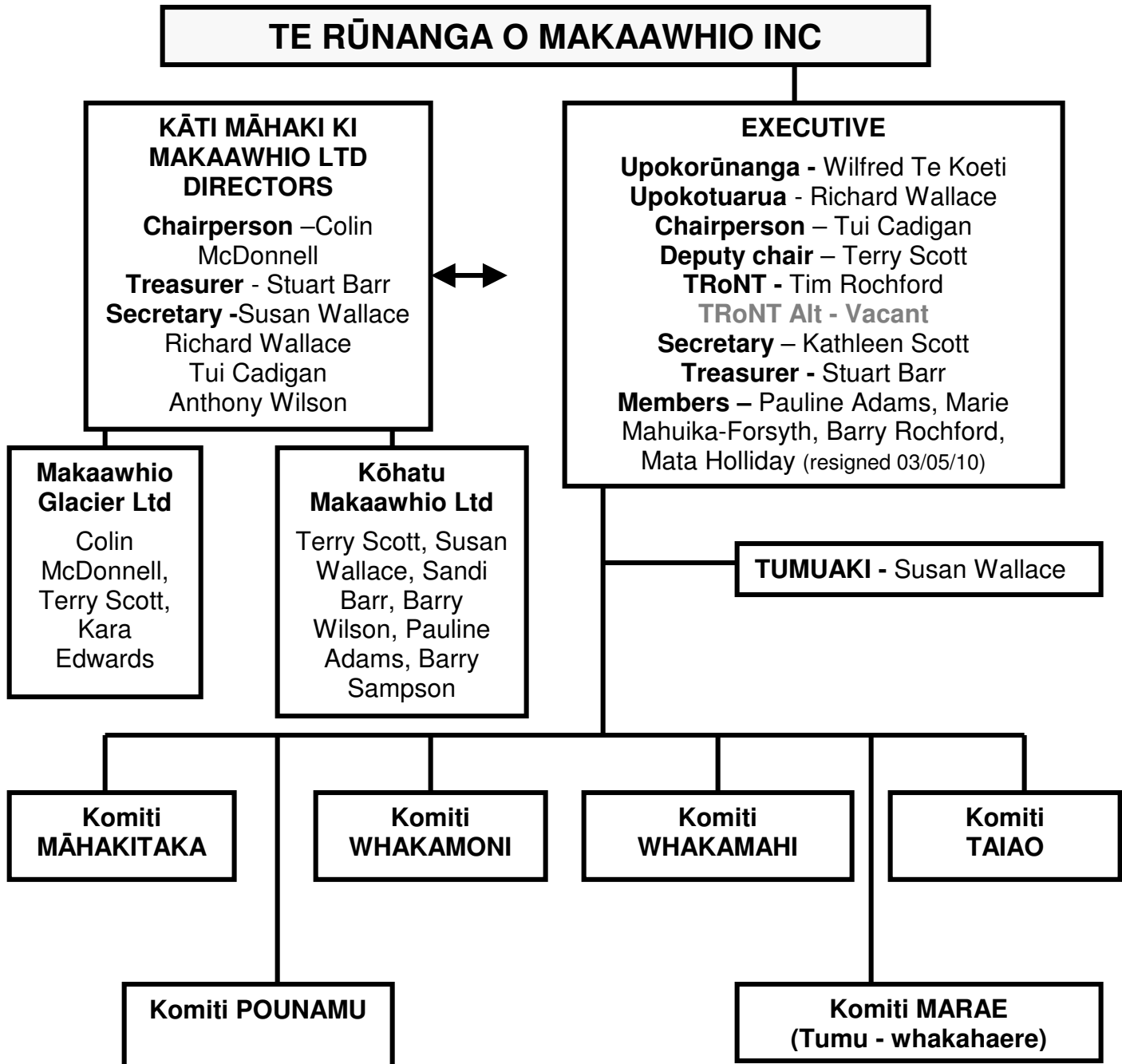
*Back row (Left to right) Marie Mahuika-Forsyth, Pauline Adams, Tui Cadigan, Mata Holliday & Kathleen Scott.*

*Front row (Left to right) Stuart Barr, Barry Rochford, Terry Scott, Wilfred Te Koeti and Richard Wallace.*

*Absent Executive member-Tim Rochford*

# WHAKAPAPA RŪNANGA

## ORGANISATONAL STRUCTURE



# KĀ MAKĀI

## REPRESENTATIVES

The following list has been updated and advises the current representatives and positions held as at August 2010.

### Komiti Mātua Standing Committee

<b>Whakamoni</b> Business Development	Stuart Barr, Terry Scott, Pauline Adams, Marie Mahuika-Forsyth.
<b>Whakamahi</b> Operations	Pauline Adams (Chair), Tui Cadigan and Mere Wallace. Susan Wallace (Tumuaki) and Waikohatu Scott (Kaiāwhina)
<b>Taiao</b> Natural resources	Susan Wallace (Chair), Terry Scott, Paul Madgwick, Richard Wallace and Waikohatu Scott.
<b>Māhakitaka</b> Culture and Heritage	Kathleen Scott (Chair), Susan Wallace, Steven McLaren, Paul Madgwick, Mike Rochford, Richard Wallace and Dougal Austin.
<b>Pounamu</b>	Terence Scott (Chair), Tui Cadigan, Gene Wilson, Sandi Barr, Tremane Barr, Marie Mahuika-Forsyth and Dougal Austin.
<b>Marae Tumu-whakahaere</b> Marae Management	Paul Madgwick (Chair), Mata Holliday, Wilfred Te Koeti, Paul Wilson, Barry Rochford, Mere Wallace, Marie Mahuika-Forsyth, Richard Wallace and Pauline Adams.
<b>Mātātahi</b> Young people	Waikohatu Scott, Steven McLaren and Jo Scott
<b>Matauraka</b> Education	Steven McLaren (Chair), Kathleen Scott, Pania Dunn and Richard Wallace.

### Komiti iti Sub-committee

Constitution Review	Terry Scott, Kara Edwards, Susan Wallace, Steven McLaren, Angela Wallace and Jo Scott.
Copeland Track Management	Terry Scott, Richard Wallace and Susan Wallace.
Makaawhio Mauri ora	Marie Mahuika-Forsyth, Kara Edwards, Juliana Zweiss, Waikohatu Scott, Susan Wallace.

## Mā kai Ngāi Tahu Ngāi Tahu Appointments/Representation

West Coast Conservation Board	Terry Scott
Development West Coast	Barry Wilson



*Kāti Māhaki whānau at Te Waipounamu House, Ōtautahi on Saturday 23 May 2009 following the completion of the presentation and approval of the Makaawhio Pounamu Resource Management Plan*

## Mā kai Rūnanga Rūnanga Representatives

Big Brother Big Sister Mentoring Prog	Val Henry
BOT - Hokitika Primary School	<i>Under Commissioner Management awaiting formation of Advisory Group.</i>
BOT - Westland High School	Kathleen Scott
Challenger Finfish Fish Plan Advisory	Paul Wilson
CYP Care and Protection Panel	Marie Mahuika-Forsyth
Development West Coast MRI	John Reid
Development West Coast MRI Pounamu Project	<i>Vacancy-with Komiti Pounamu</i>
DoC Kaitiaki Rōpū	Terry Scott, Richard Wallace
DoC Mahitahi Rōpū	Terry Scott, Richard Wallace
DoC-Putahitaka	Tui Cadigan, Terry Scott, Richard Wallace
DoC WC Taxon Management Group	Tui Cadigan, Richard Wallace
Education West Coast	Kathleen Scott
Left Bank Art Gallery Trust Board	<i>Vacancy</i>
MOE Special educations	<i>Vacancy</i>
NZ Police Interview Panel	Pauline Adams, Barry Rochford
NZ Police Local Advisory Group	Richard Wallace, Susan Wallace
Ōkārito Trust	<i>Vacancy</i>

Restorative Justice Panel	Mere Wallace
---------------------------	--------------

### Mā kai Rūnanga Rūnanga Representatives (continued)

Tai Poutini Polytechnic Council	No representation
Tai Poutini Polytechnic Academic Board	No representation
• Eco Tourism Advisory Committee Centre Excellence for in Tourism	No representation
• Jade Advisory Committee	No representation.
WCDHB Hospital Advisory Committee	Richard Wallace
WCDHB Community and Public Health Advisory Committee/Disability Services Advisory Committee	Marie Mahuika-Forsyth
WCDHB-HEHA Committee	Marie Mahuika-Forsyth
WCDHB Tatau Pounamu	Richard Wallace, Marie Mahuika-Forsyth
West Coast Marine Forum	Richard Wallace
West Coast Primary Health Organisation	Richard Wallace
West Coast Regional Council Resource Management Committee	Terry Scott
West Coast Regional Land Transport Committee	Terry Scott
West REAP	Steven McLaren
Westland Safer Community Council	Val Henry
WDC Legacy Group for Active Westland	Marie Mahuika-Forsyth



*Westland Tai Poutini National Park 50<sup>th</sup> Anniversary Celebration-Waiau*



# PANUI PŪTEA

## FINANCIAL REPORT

Tēnā koutou katoa

Before introducing this report I need to make some comments. Because the Audit Accountant and myself are both located in Christchurch, we have both been badly affected by the recent earthquake. In both cases we have had our Offices closed for some time. This year there is a change of staff member handling our work. Both these reasons have contributed to the likely occurrence that the accounts presented will not be audited at this time.

Continuing with the regular format we again need to consider our four defined sets of accounts, when considering our overall financial well-being.

### **1. Te Rūnanga O Makaawhio Incorporated Society: is our major activity or General / Administration account.**

This is principally funded by way of Grants from Kāti Māhaki Ki Makaawhio Limited and this is added to by specific Grants for specific purposes.

It can be seen, by reading the accounts, that both Income and Expenditure in the past financial year have been relatively stable. Our largest expense is Wages, which have little changed from last year.

The next major expenses are Honorarium /Meeting and Travel costs. The combined costs of these three accounts again show a natural growth type increase. Neither Honorariums/Meeting expense rates nor mileage reimbursement rates have been increased. More meetings are now attended on behalf of the rūnanga and it is this area, which has shown an increased cost of operation.

It is pleasing to note that Ngāi Tahu have from the start of this financial year increased the Putea grant from them, and that should well cover the increase in operational costs which do occur each year.

**2. Te Rūnanga O Makaawhio Marae Account:** this account tracks the financial activity around our Marae.



It is now well established that our Marae activity income is not producing enough to cover the holding operational costs. Necessary compliance costs,

maintenance and insurance are not covered by operational income. The same as last year the comment is that this account will require continual subsidy from the runanga. The account overall shows a substantial deficit.

Without Grants from Kāti Māhaki and the Makaawhio Admin account funding the ground maintenance contract, the cash flow for this account would be a problem.

The major part of the deficit comes from Depreciation; this is an accounting exercise rather than cash one. As this place is the core of our being we must accept that, but continue to find ways to earn elsewhere.

Many thanks to those few direct donors, who make contributions into this account on a regular basis. It would be great if more whānau were able to this.

**3. Kāti Māhaki Ki Makaawhio Limited:** the Charitable Company owned 100% by the Rūnanga.

Its major role in this past year has been to fund the Administration of the Rūnanga. It also supplied significant Grant funds to the Marae account.

In the past year its income has come from Putea Whakamahi from Ngāi Tahu, but also a major cash distribution from the Glacier Guiding Joint Venture. The good news around the Glacier Company is that through the last year we had a distribution large enough to clear our debt on share purchase.

On past year performances this should bring some \$75,000.00 + into the Groups funds in future years. As the sole shareholder in the Glacier Company it does have the security of being able to call funds from there.

Also as mentioned earlier Ngāi Tahu have seen fit to increase the Putea to runanga by around \$24,000 per annum.

**4. Makaawhio Glacier Limited:** owned 100% by Kāti Māhaki.

This is currently our major investment, also our major income earning Company. This Company which is a joint venture partner in the Glacier Guiding operations has continued to make good profits, As mentioned above our purchase of shares to the current level has been completed.



We have been receiving in cash only 20% of our share. In this year we will receive the full 100% in cash. This represents our major returning investment.

The whole picture is a sound one. If we combine the net asset value of all the Rūnanga entities we see a combined net asset worth in excess of \$2,400,000.

### Where to from here?

We have built some strong foundations. There is scope in the coming year to see some income from our rohe from Pounamu trading. A single purpose Company has been formed, again owned by Kāti Māhaki Ltd. To date it has settling in after its formation. Hopefully through this next year we will see some benefit from this Company.



*Kōhatu Tahutahi-Cascade stone known as "Snowflake"*

It will be a good day when we start to see some income source other than Grants.

- The commercial section alongside the Marae is to be developed, with ideas to be formulated into a plan.
- There are also some investigations about to take place around relocation of our Office.
- Some small business opportunities are being pursued.

Hopefully some of these will also bear fruit through this coming year.

To the hard working Chair Tui, who is stepping down, fellow Executive members and the Rūnanga Office for their assistance in keeping a close awareness of our financial position throughout the year –I say kia ora, kia ora many times.

We have achieved a lot in many areas, but there is still much to be done.

Finally, as this is the AGM of the Incorporated Society, which includes the Marae accounts, I would like to move that my report and the Annual Accounts for those entities, as presented be accepted.

Stuart Barr  
Kaiputea  
*"Me mahitahi tātou"*

# KAIWHAKAHAERE

---

## CHAIRPERSON

Tēnā koutou katoa, Kāti Māhaki Whānui

Once again we gather in our tipuna whare to speak of the year that has passed and dare to hope for to what is to be. This year was a mixture of excitement and possibility hampered by individual greed and failure to capitalise on opportunities, because too much time was required to deal with whānau squabbling. Despite this, executive members committed themselves to the task at hand and gave willingly of their talents and energies for the benefit of the hapū.

There are a number of joint ventures that look promising and require further investigation which I hope the new executive will give due consideration to.

Pounamu has again dominated the horizon with some gains as well as a number of outstanding issues that need to be finalised. It has been difficult at times to attend to the basics due to lack of availability of hapū members to participate. Hui have had to be cancelled which is disappointing but unavoidable.

I want to pay tribute to my executive individually for their work on behalf of this hapū they have worked well together and generally applied themselves to roles they have taken on. I want to express my sincere thanks to Terry Scott for the outstanding service he has given to me as Kaiwhakahaere, to other executive members, in his dealings on our behalf with Ngāi Tahu whānui and a variety of Government departments and other bodies with which Te Rūnanga has had to engage. Thanks for the experience and wisdom you brought to the executive Terry.



*Hui Rūnanganui (Executive Meeting)*

Kia ora koe, Wilfred. Thank you for your efforts both in the role of Upoko and your contribution at the table during discussions, which at times were very complex and tense. Even when your health was questionable you remained committed to serving this hapū. Kia ora.

I thank our treasurer Stu Barr for his financial expertise applied on our behalf and for his patience with those amongst us who require greater explanations on matters monetary. Thanks also for the insights you bring regarding investment and business possibilities. I am grateful for your honesty, which has meant I



*Rowi translocation from Ōkārito to Oraka Aparima*

could relax knowing that over these three years you have kept the books well. I have enjoyed working with you Stu. Kia ora koe.

Thanks to our secretary Kathleen Scott. Even with the technological difficulties we have had at times, not to mention the odd bit of tension, we have managed to keep reasonable records of Rūnanga business. Thanks also for the contribution you have made in the areas of education and Māhakitanga that will have long term benefits in building up the hapū. Kia ora koe Kathleen.

Thanks also to Richard Wallace, both for his contribution at the table and also as our deputy Upoko. You have served the hapū as an executive member with your ability in Te Reo and knowledge of tikanga as well as that of Kaikarakia and Kaikōrero. While we often clashed on issues I do give credit where it is due for the work you have done for the Rūnanga.

Thanks to Marie Forsyth for your contribution to the work of the executive. Your commitment at executive level and on sub-committees was appreciated. You bring a unique perspective to the table. I have enjoyed the way you have argued your position on issues with courage and you have not been afraid to speak your mind.

Thanks to our TRONT representative for providing that active link between TROM and TRONT. It has been very helpful to the executive getting answers to questions regarding what TRONT is saying and doing on our behalf. The linkup with you Tim for executive hui has been valuable for the hapū. We have been able to convey our position and hear the work of TRONT first hand. The role has worked well since regular linkups have been happening. Kia ora koe Tim.

I want to thank Pauline Adams for her contribution to the Rūnanga mahi. Your skill working with large budgets has been valuable in executive discussions and the work of komiti whakamoni. Thanks for your oversight of the working of the office also. I appreciated your willingness to work on sub-committees when asked. The experience you bring from your work with the Department of Conservation has been very valuable. Your sense of humour has been an asset at the table. Kia ora Pauline.

Barry Rochford as a young family man brought a new perspective to the table that was refreshing. You often held a quite different view to the rest of the table which was helpful for our discussion. You have a good knowledge of the rohe and a lived experience that makes you passionate about Makaawhio. You have made a valuable contribution to the work of the Runanga and I thank you.

May I also thank our office manager, Susan Wallace for her continued work in a number of areas on our behalf. You are a frontline member of TROM and the feedback I have had from people has been primarily positive. Thanks for your commitment, which at times means dealing with ungrateful whānau. Kia ora Susan.

The last member of the staff, Waikohatu Scott has provided a necessary complementary role alongside Susan and has offered great support to Executive members and hapū members also. Wai your friendly manner and helpful attitude is appreciated. All who come to the office have gratefully accepted your manaakitanga.

I want to wish the new executive well for the future. The way ahead has every possibility of being exciting and innovative if the right mixes of skills are elected. While the usual suspects will make themselves available again I urge hapū members to look at the qualities that are on offer. Avoid drama queens and those who claim to have vision but are known to be looking only after their own.

Finally there are two matters that I feel duty bound to raise, firstly elect people who are pro-Makaawhio and do not have a blurred sense of who holds manawhenua in South Westland. The other is do not let Māhakitanga become subordinate to Northern Iwi perspectives, you can be sure they would not let Māhaki do it within their rohe.

Nō reira te whānau me te hapū hoki, tēnā koutou, tēnā koutou, tēnā tātou katoa.

Sister Tui Cadigan RSM  
Kaiwhakahaere



*Cadgan Whānau-Marae Noho*

# UPOKOTUARUA

---

## DEPUTY HEAD

“Ka aru mātou ia te Karaiti,  
Tui, tui, tuituia mātou.  
Tuia ki te mamae.  
Tuia ki te tumanako,  
tui tui tuia ki te ora”

Tuia ki kā mamae aroha ki a rātou kua haere atu ki te pō, ki te pō uriuri, ki te pō takotako, ki te pō tewhatewha, ki te pō i oti atu ki te mate e.  
Haere koutou ma ruka i o koutou waka whakamutuka. Hoia atu ki te kāika tūturu o te takata, arā ki a Raroheka, ki a Hinenui te pō, arā hoki, kai ruka rawa ki te kāika e whai tātou. Kia lhowa o kā mano, Haere okioki atu.

Rātou ki a rātou, Tātou ki a tātou. Tātou nei i whakatakata nei i a tātou Hui ā tau, tēnā koutou, tēnā koutou, tēnā koutou katoa!

Another extremely busy year has flown by. I have been privileged to represent the Rūnanga on a number of internal and external komiti and forums and have included a separate report in the “Annual Report Supplementary” in relation to the representative positions I hold.

In addition to this work, I have continued to carry out some of the cultural work required of the rūnanga, attended events in partnership with Ngāti Waewae and on behalf of Te Rūnanga o Ngāi Tahu.

Some of events I have been fortunate to participate in over the last year have



“  
*Te Ara a Waiau*”-new sealed glacier road

been; Westland Tai Poutini National Park 50<sup>th</sup> Celebration, a number of pōwhiri to welcome people into new positions and visitors/dignitaries to the coast, a number of site blessings (in support of some of the TROM relationships with signing of a new Rowi translocation MOU at Waikawa and the return of our manu (Kiwi being returned home after being hatched and raised on Kohaka Islands as a method of helping to save our populations of Rowi and Tokoeka), Mō Tātou/Mō Kā Uri

Exhibition in Otautahi and

I have also continued to undertake the necessary Kaikarakia services required within our rohe in relation to fatalities and .

Despite the workload, I am very proud to be a representative of the Rūnanga, to be of service to our people and to be given the opportunity to contribute in so many areas.

*“E hara I te toa, I te toa taki tahi. Ekari taku toa, I te toa taki tini”*



I would like to acknowledge the Executive members for their work and commitment to the Rūnanga. There has been a lot of work achieved and the groundwork laid for some very exciting developments that should see some fruition in the not too distant future. *Kia kaha ake koutou!*

I would also like to acknowledge the work of the many komiti members, representatives and volunteers who help to keep the mechanics of the

rūnanga ticking over. You will see the variety of work undertaken at komiti level and I would like to encourage others to consider contributing by becoming members of our komiti

Thanks also to the office staff for their work throughout the year.

Ki tāku whānau, tēnei te mihi aroha ki a koutou, hei kaitautoko i tōku mahi. Huri noa ki a koutou, te whānau o Kāti Māhaki, ka nui kā mihi ki a koutou katoa. Mā te atua koutou e manaaki, e arahi, e tiaki hoki i kā wā katoa.

Tū Hawaiki!

Venerable Richard Rangi Wallace QSM-Upokotuarua

Despite the workload, I have felt very proud to be a representative of the rūnanga and to be given the opportunity to contribute to so many areas. *E hara tāku toa I te toa takitahi, ēngari tāku toa i te toa takitini* The work that I do is not for me, but for the many to come...

# TE RŪNANGA O NGĀI TAHU REPRESENTATIVE

---

## TRoNT Rep

*Toku mihi aroha ki ka mate o te wa*

*Te mano tini kua mene ki kā Hawaiki katoa, rātou te tutūtaka o te puehu, te whiuka o te kupu i kā wā takatū ai rātou. Heoi, waiho ake rātou ki a rātou, tātou te urupā o rātou mā, ngā waihotaka mai e hāpai nei i o rātou wawata, tūmanako hoki.*

As a result of a combination of work and family commitments (including the return home of my eldest daughter from overseas) I will not be able to come down for the AGM. I therefore submit my apologies and wish you all a successful and enjoyable hui and hope the blessings of our beautiful whenua bring peace to us all.

2010 has seen a significant improvement in our economic position which has seen Ngai Tahu Holding Corporation make a remarkable recovery from the international economic recession of 2008. This gives us a clear indication that the fundamental structure of our business is sound. We have redeveloped specialist boards for our business subsidiaries and these are beginning to bring regeneration of our fisheries, properties and tourism portfolios.

While our economic position is strong we will of course be affected by the terrible shocks that have hit the South in recent times. While bad weather continues to plague us the earthquake and collapse of South Canterbury Finance has left the Te Wai Pounamu feeling vulnerable. The crash at Fox has contributed to the trauma and our hearts go out to all those who lost whanau while in our beautiful but often unforgiving whenua.

The quake miraculously took no lives and our whanau was shaken and continues to be plagued by aftershocks. None of our properties have been substantially damaged and we should incur no financial cost as a tribe but I am aware that our whanau may not be so lucky and we will need to consider how we can tautoko those left homeless and hurt by the efforts of Ruamoko. Te Runanga staff and whanau have been on the front line in manaaki of those affected and of course we will be putting our hand up for the rebuild of Christchurch both spiritually and physically.

### **Te Runanga O Ngai Tahu**

As the electoral process concludes (at this stage only Awarua have to complete their election) all representatives must now turn to building a common future for

us all. I hope the infighting and factionalism have been put behind us and we can continue to serve and build the tribal capacity across economic and social fronts.

TRONT now has in place a number of ways to support the whanau and we should all make sure we are taking advantage of these. There is Whai Rawa savings scheme which should build our families long term future through matched savings and dividends. There is the Ngai Tahu fund which can support whanau projects including whakapapa hui and cultural development.

There is support for education through student grants and the Makaawhio runaka gets a annual payment (Putea Whakamahi; increased this year to \$194k) that allows us to manage our runaka office and other payments such as Putea Whakatautoko (\$1.5) that we used to develop our marae and invest in business interests such as the Franz Glacier guiding.

These are there for our whanau to benefit from so make sure we are able to make use of these. TRONT is currently exploring options for a extra 9 Million in aquaculture and fishing funds and I have been advocating for all or a significant proportion of this funding to go to a third Putea Whakatautoko payment so that we can continue to develop the financial capacity of Kati Mahaki.

## **Makaawhio**

As I am unable to be there I want to pay tribute to the current executive who have done a great job at keeping us moving forward and in particular the excellent work on Pounamu, keeping the industry on their toes while working steadily to develop our own capacity to manage and promote our beautiful taonga.

Finally I would like to pay tribute to two whanau members who are standing down from key positions in our whanau. Wilfred has been our Upoko for many years and his mana, strength and quiet dignity have served us well and his wisdom will be missed. I wish you well in retirement and hope you and Joy get to enjoy family and whenua. I particularly want to pay tribute to Joy who has always been there for us with kindness and love. For Tui who has been our chair through extraordinary and difficult times you have upheld the mana of Kati Mahaki and your strait talking style has been what we needed and we will miss your strength.

## **NO REIRA**

### **Kia hora te marino**

---

*Kia whakapapa pounamu te moana  
Kia tere te karohirohi I mua I te huarahi*

Arohanui

Tim Rochford

# KOMITI TAIAO

## NATURAL RESOURCES

---

Taiao has met on a regular basis through the year. Members of the Komiti are Richard Wallace Susan Wallace Paul Madgwick Waikohatu Scott and myself

In the main Taiao deals with a plethora of applications from gravel extractions, guiding concessions through to Mining application landing permits and the list goes on.

### 1080

The most controversial issue dealt with this year has been the 1080 debate. It was a bit grueling at times with people flying various flags

One of my concerns through the process was the personal attacks on individuals and some very sweeping attacks on the executive. On one occasion I was personally told that I was part of a terrorist group. I actually think the person believed it. However like many I have been called worse and have been subjected to worse abuse.

The end result of all that is the executive after all the consultation developed a policy that says no use of 1080 in our Takiwā. Could I thank on your behalf the Komiti members who devoted time to this mahi.

### Copland valley

A decision was taken four years ago for the Runanga in partnership with DOC to establish Pou Whenua in the Karangarua /CoplandValley A small sub komiti of T Scott ,R.Wallace and S.Wallace was established to progress the matter.Kara Edwards in her capacity as Pou Kura Taiao is the DOC contact person. Funding has been budgeted this year to work toward a conclusion.

### Kiwi

I attended a Hui at Pukutaraki to discuss the possibility of establishing a Kiwi sanctuary at the Wildlife eco sanctuary at Orakanui at Waitati North East of Dunedin.

Both Susan and Richard were to attend but were taken by the flu.

Kara attended in her capacity as Pou Kura Taiao DOC.This was the second time I had had contact with the Sanctuary The first was when I attended a Ngai Tahu Conservation Board members hui early last year.

At that time I had some concerns in that Orokonui seemed not to have a good relationship with Huirapa .This was due in my view because of a lack of understanding of Tangata Whenua relationship with the natural world.

This time was some what different.

We met with Huirapa prior to the attendance and decided on some strategy on how to progress.

In the first instance we wanted a strong relationship to develop between Huirapa and Orokonui .

The next thing we wanted was a strong MOU between ourselves and Orokonui . As well as Huirapa.,and of course a strong MOU between both Runanga.

We are on the way to achieving that I believe.

The success of that I think is that the Orokonui Trust now has a chair who understands Maori and their aspiration.

He is Neville Peat the author and naturalist. I have personally known Neville for many years and find him to be a very honorable man. So I am confident that the outcome will be in the best interest of the Totoweka

**Whio** (*Hymenolaimus malacorhynchos*) the Blue Duck and known in some quarters as the Whistling Duck

I believe we owe it to ourselves and future generations to ensure a viable number of Whio remain in our Takiwā.

We have been informed that there has been a hatch and survival of Whio in the Awa this past season. Some more work needs to be done by us on the protection and increase of the Whio stock. Just this month we as Tai Ao have had a proposal to move fertile Whio eggs from the Mikonui for artificial incubation and rearing the resultant duckling to juvenile stage then releasing them into the Moonlight / Pike river area in Northern Westland. That in itself is laudable as the stock in the Pike River are near to or are non existent.

My problem is that I think more effort should be going into enhancing the Whio stock in our Awa.

Finally could I thank the other Komiti members for there input this past year it has at time been very quiet and at other times a roller coaster.

## **KOMITI POUNAMU**

---

### **POUNAMU**

#### **Komiti Members**

Sandi Hinerangi Barr, Tremane Barr, Gene Wilson, Marie Mahuika-Forsyth, Terry Scott and Dougal Austin have served as komiti members over the last twelve months.

The printing and distribution of our Pounamu Management Plan is starting to have some effect. People who have a copy are finding it to be a useful document.

A Hui called by Ngāi Tahu of the kaitiaki Rūnanga Pounamu was held in our Marae from 2<sup>nd</sup> to 3<sup>rd</sup> July. It was well-attended and some good presentations made. A special thanks to Tremane Barr for stepping up to do the Mihi on behalf of Makaawhio in the absence of Richard who was delayed until the Saturday. Well-done Tremane.

We need to manage our pounamu resource with great care. With that in mind the executive appointed a working group to look at how best to establish a commercial company for the appropriate extraction and sale of our Pounamu. At writing the company has not yet met.

The next

Business *Aroha Timoti at work...*  
manage  
interest of  
done on  
done.

step needs to be the establishment of a Strategy and plan with Kāti Māhaki on how to the sale of Pounamu in the best the future. Some work has been that a lot more has yet to be

### **Legal**

The 19<sup>th</sup>

### **matters**

July was set down by the Christchurch District Court to

hear the proceeds of crime case brought by the crown against David Saxton and the estate of Morgan Saxton. The case has been rescheduled because the court fine of \$300,000.00 has not been paid. Provision has been made for the defendants to submit a financial position to establish if they have an opportunity for parts of the farm to be sold to enable them to pay the fine.

No date has been confirmed for the proceeds of crime hearing. The advice that I have from Ngāi Tahu Legal is that a date in late November is hoped for. Three days are being set aside.

### **The Jade Raid**

Following the Police raid on the Jade Factory in Hokitika a number of actions have been undertaken to stop the illegal sale of “Snowflake”.

Letters signed by Makaawhio, Ngāi Tahu and the NZ Police have been sent to the retail outlets notifying them that the Pounamu known as “Snowflake” is an illegal commodity and that they should notify Makaawhio, Ngāi Tahu or the Police if they have it in their shop.

To date it has had a positive response with a number of outlets notifying that they have removed snowflake from their shelves. The same letter was sent to Trade Me, as a result they have undertaken not to have it displayed on their web site.

We have a long way to go to achieve our dreams on Pounamu but step-by-step we will get there. Could I on your behalf thank all those on the Komiti who have put time and effort into it. We do not always agree on how to get there but I feel confident that we will get there.

Terry Scott-Oxford September 2010

# KOMITI MĀHAKITAKA

---

## CULTURE & HERITAGE

E te hapū o Kāti Māhaki ki Makaawhio, tēnā tātou katoa!

Komiti Māhakitaka members have continued to meet regularly by telephone conference call and do much of the mahi by email.

### Heritage

We have received support from the Rūnanganui to register a Wāhi Tapu area with the Historic Places Trust for protection in conjunction with other mechanisms such as Mataitai. The application process will be commenced shortly. Dougal Austin will continue to work on completing an inventory of taoka from South Westland held by major museums around the country.

### Te Takiwā – Our Region

For the Copland valley Katau Creek has gone to the public consultation stage and recently we have been instrumental in recognising a small lake north of Okarito as Okarito-iti (Lake Windemere).

Some of the other place names that are on the list for correction at some stage in the future are:

Makarata instead of Makatata  
taona

Waitangi tahuna instead of Waitangi

Arawhata instead of Arawata

Waitoto instead of Waiatoto

Maitahi instead of Mahitahi

Waiau instead of Waiho

Pouerua instead of Poerua

Mapouriki instead of Mapourika

Wahapako instead of Wahapo

### Advice to external organisations

We have given advice to a range of organisations over the past year. eg Ngāi Tahu tourism with cultural interpretation, DOC signage at Lake Matheson, Lake Mahinapua, and, educational and tourism organisations often consult us about appropriate names, interpretation.

### Kakahu

The kiwi feathers have been sorted but there is still plenty of work needed prepping the feathers and muka for weaving. Aunty Doe and Morehu Fluerty will be back on board again having been busy completing the tukutuku work for Rapaki Marae due to open up later this year.



*Aroha Timoti at work...*

### **Kōrero Māhaki project**

The CD of Kāti Māhaki kōrero is still in preparation to develop the cultural capacity of our hapū. It will include an example of pepeha, mihimihi, karaka and mihi whakatau for those who are taking their first steps in manaakitaka roles at our marae. We will include a few of our own waiata and some karakia that we use at our hui.

Kia ora koutou o te komiti; ko Mike Rochford, ko Paul Madgwick, ko Steven McLaren, ko Susan Wallace, ko Rihari Wallace, koutou ko Dougal Austin.

Kā mihi hoki ki a koutou katoa  
Kathleen Scott, Hokitika (Rima 2010)

## **KOMITI WHAKAMAHI**

---

### **OPERATIONS**

#### **Ngā mema o te Komiti**

Mere Wallace, Susan Wallace, Tui Cadigan, Waikohatu Scott and Tiamana - Pauline Adams

The first point of contact for the Rūnanga is the office, both Susan and Waikohatu do a marvellous job fielding the constant flow of phone calls and emails that come through on a daily basis on a range of different issues. These are all dealt with in a polite and efficient manner, with sub committees and executive members kept up to speed and well informed on all Rūnanga business.

There have been several hui held at the Marae this year that have taken either Susan or Wai from the office to assist with the powhiri. While they do a wonderful job this takes them out of the office for a day or sometimes longer, and so it is intended to encourage others within the Rūnanga to come forward to assist with this and if needed 'coaching' and transport will be provided.

One success in the office this year was the final arrival and installation of the new computer system, paid for by Ngāi Tahu. We have been waiting over a year for this to arrive and now that it is up and running it provides the office staff with software that was previously not available

Kai te mihi  
Pauline Adams

# KOMITI MARAE TUMU WHAKAHAERE

## MARAE

It has been a very productive year for our Marae, as the komiti picked up a big backlog of unfinished jobs and maintenance to bring the Marae back up to standard.

I was pleased to be invited back on to the komiti 11 months ago, and was elected chairman in December, after kaumatua Richard Wallace stepped down from the role. Also, the komiti reluctantly accepted the resignations through the year, due to various reasons, of Steve Docherty, Mata Holliday, Pauline Adams and Barry Rochford. This leaves a komiti of six: Wilfred Te Koeti, Richard Wallace, Marie Mahuika, Paul Wilson, Mere Wallace and Paul Madgwick.

The Marae was not in a good state 12 months ago, and it took a lot of effort, sweat and commitment from a few people over a series of intense working bees to get to where we are today. I therefore take the opportunity to publicly thank and Marie Mahuika and Steve Docherty, Richard and Mere Wallace, and Maria Russell, with help along the way from Paul Wilson and Mata Holliday.



Jobs completed during 2009-10:

- Large wood burner installed in wharekai Poke. Electric heaters installed in all bathroom units, ceiling fans installed in Poke and whare tipuna Kaipo.
- Ongoing sewerage system problems solved.
- Second dishwasher installed.
- Maintenance brought up to standard, inside and out.
- Back-up generator issue solved: \$11,000 cost of building shed avoided by having weatherproof cover made for \$752.00.
- Maintenance contractor issues resolved.
- Trellis completed in front of whare paku, planter boxes for rongoa garden.
- Operating manual completed for all hirers.
- Garden shed built.
- Two tunnel houses erected and planted.
- Three potato-growing boxes assembled and planted; herb garden updated and improved.
- Outside areas gravelled.
- Budget submitted.
- Rimu panelling installed in Poke.

We have achieved a lot of the above work with external funding: wood burner, bathroom heaters, ceiling fans (Lotteries Commission community fund); trellis (Department of Conservation West Coast staff); Marae garden project (Healthy Eating, Healthy Action of the West Coast District Health Board, and Mara Kai fund of Te Puni Kokiri). Also, we welcomed the donation of a large gas operated 'hangi' courtesy of Te Aiorangi Maori



Women's Welfare League and their on-going maintenance and replanting of the herb garden. We are very grateful for all this generous support for our Marae.

The main jobs to be tackled over the coming spring and summer include: paint laundry; plant kowhai seedlings from the old Makaawhio Pā around the Marae; fix gates; extend pa harakeke down to tanks; erect flagpole and base in time for Anzac Day 2011.

The Marae has been used steadily through the year, but this use was well below the number of bookings we had previously.

Apart from Marae Komiti working bees and meetings, whānau use has been minimal – three whānau reunion/hui (Cadigans, Barrs and Addisons), Anzac Day service and lunch, one pounamu hui and several executive meetings.

Outside bookings are also well down on former levels, due to the lack of manpower to host. In the past, the office has helped with hosting all number of manuhiri at the Marae, however this has been severely curtailed by current policy with the result that we have had to turn away many bookings and potential income.

The fact is that we have only a small pool of people willing to take time out of their own lives to travel to Mahitahi to help with hosting manuhiri and we owe a debt of gratitude to these few who keep the flame alight for all of us.

In this respect, I mihi to our dedicated and reliable manaakitanga group – Richard, Mere and Susan Wallace, Waikohatu Scott, Maria Russell, Mata Holiday and Marie Mahuika – and also to those who have been prepared to warm our paepae, notably Richard and Steven McLaren. The wealth of a hapū is measured not in monetary terms but in the depth and sincerity of its hospitality - manaakitanga.

Paul Madgwick  
Chairman Te Komiti Marae Tumu-whakahaere

# TUHITUHI

---

## NOTES



# TUHITUHI

---

## NOTES

# MIHIMIHI

## GREETING

(Translation of Mihimihi on inside front cover)

*I begin at the summit of Aoraki, our chiefly mountain that pierces the sky. I turn to the south to the ancestral mountain, Tutoko.*

*My thoughts drift to the sacred river, Makaawhio and the precious treasure, Aotea sparkling in the water as it flows to the sea.*

*I look to Heretaniwha Point, the leaping place of loved ones spirits. I listen to the thunderous tides at Bruce Bay and rest the canoe at the standing place of Kāti Māhaki at Te Tauraka Waka a Māui Marae.*

*There are Kaipo and his wife Poke. Their rakatira presence, shelters the people. . They are symbols also of the stories of our ancestors, of the genealogical ties that bind all of us.*

*Uruao is the waka, Rakaihautu the man, Te Koeti Turanga the ancestor, Kāti Māhaki is the subtribe, Kāti Mamoe and Kāi Tahu the tribes, I sneeze the sneeze of life...*

*Firstly, I give thanks to god. All honour and glory to him, peace on earth to each and everyone, no matter whom.*

*Acknowledgement then follows of those who have passed away.*

*As is customary, we leave the dead with the dead and the living with the living and return to the world of man.*

*Followed by greetings to everyone.*



*Ko Tutoko te mauka tipuna*



*Ko Makaawhio te awa tapu*



*Ko Maitahi te whaka*



*Ko Kaipo te Wharetipuna*



*Te Rūnanga o Makaawhio Inc*

*Po Box 225, Hokitika 7842  
1<sup>st</sup> Floor, ASB Bank Building  
99 Revell Street, Hokitika  
Telephone: 03 755 7885, 0800 955 007  
E-mail: [makaawhio1@xtra.co.nz](mailto:makaawhio1@xtra.co.nz)  
[www.makaawhio.maori.nz](http://www.makaawhio.maori.nz)*